

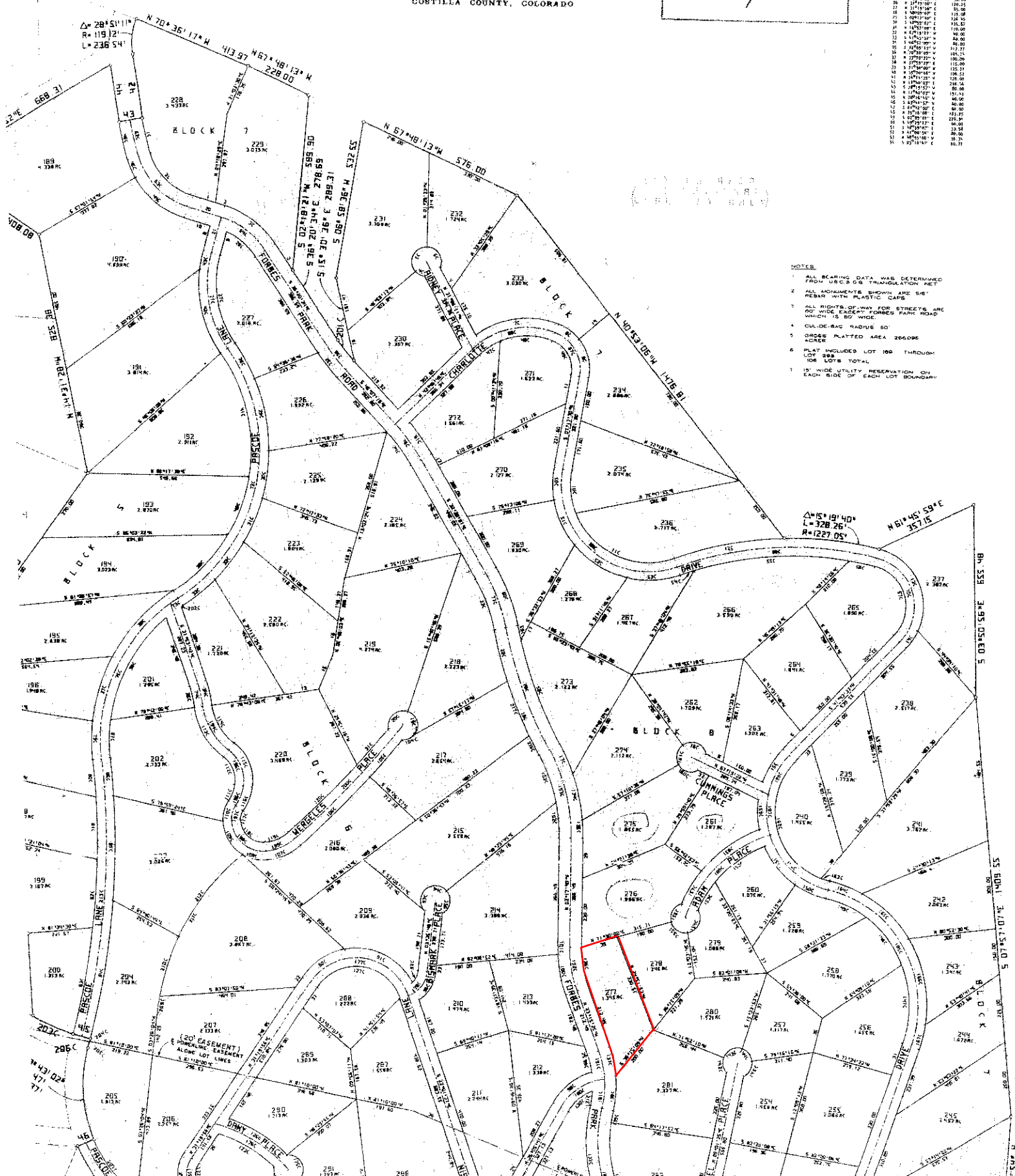
THE ARROW INDICATES  
THE RANCH SITE  
SELECTED FOR YOU.

*J. Galbraith*

# UNIT A-2, SUBDIVISION OF FORBES PARK

SITUATED IN A PORTION OF THE  
SANGRE DE CRISTO GRANT IN T. 89S., R. 70W., 5th P.M.  
GOSTILLA COUNTY, COLORADO

LINE	BEARING	LENGTH	AREA
1	N 70° 36' 17" W	413.97	174.71
2	N 67° 49' 13" W	576.00	178.50
3	N 61° 45' 59" E	357.15	132.00
4	N 61° 45' 59" E	357.15	132.00
5	N 61° 45' 59" E	357.15	132.00
6	N 61° 45' 59" E	357.15	132.00
7	N 61° 45' 59" E	357.15	132.00
8	N 61° 45' 59" E	357.15	132.00
9	N 61° 45' 59" E	357.15	132.00
10	N 61° 45' 59" E	357.15	132.00
11	N 61° 45' 59" E	357.15	132.00
12	N 61° 45' 59" E	357.15	132.00
13	N 61° 45' 59" E	357.15	132.00
14	N 61° 45' 59" E	357.15	132.00
15	N 61° 45' 59" E	357.15	132.00
16	N 61° 45' 59" E	357.15	132.00
17	N 61° 45' 59" E	357.15	132.00
18	N 61° 45' 59" E	357.15	132.00
19	N 61° 45' 59" E	357.15	132.00
20	N 61° 45' 59" E	357.15	132.00
21	N 61° 45' 59" E	357.15	132.00
22	N 61° 45' 59" E	357.15	132.00
23	N 61° 45' 59" E	357.15	132.00
24	N 61° 45' 59" E	357.15	132.00
25	N 61° 45' 59" E	357.15	132.00
26	N 61° 45' 59" E	357.15	132.00
27	N 61° 45' 59" E	357.15	132.00
28	N 61° 45' 59" E	357.15	132.00
29	N 61° 45' 59" E	357.15	132.00
30	N 61° 45' 59" E	357.15	132.00
31	N 61° 45' 59" E	357.15	132.00
32	N 61° 45' 59" E	357.15	132.00
33	N 61° 45' 59" E	357.15	132.00
34	N 61° 45' 59" E	357.15	132.00
35	N 61° 45' 59" E	357.15	132.00
36	N 61° 45' 59" E	357.15	132.00
37	N 61° 45' 59" E	357.15	132.00
38	N 61° 45' 59" E	357.15	132.00
39	N 61° 45' 59" E	357.15	132.00
40	N 61° 45' 59" E	357.15	132.00
41	N 61° 45' 59" E	357.15	132.00
42	N 61° 45' 59" E	357.15	132.00
43	N 61° 45' 59" E	357.15	132.00
44	N 61° 45' 59" E	357.15	132.00
45	N 61° 45' 59" E	357.15	132.00
46	N 61° 45' 59" E	357.15	132.00
47	N 61° 45' 59" E	357.15	132.00
48	N 61° 45' 59" E	357.15	132.00
49	N 61° 45' 59" E	357.15	132.00
50	N 61° 45' 59" E	357.15	132.00
51	N 61° 45' 59" E	357.15	132.00
52	N 61° 45' 59" E	357.15	132.00
53	N 61° 45' 59" E	357.15	132.00
54	N 61° 45' 59" E	357.15	132.00
55	N 61° 45' 59" E	357.15	132.00
56	N 61° 45' 59" E	357.15	132.00
57	N 61° 45' 59" E	357.15	132.00
58	N 61° 45' 59" E	357.15	132.00
59	N 61° 45' 59" E	357.15	132.00
60	N 61° 45' 59" E	357.15	132.00
61	N 61° 45' 59" E	357.15	132.00
62	N 61° 45' 59" E	357.15	132.00
63	N 61° 45' 59" E	357.15	132.00
64	N 61° 45' 59" E	357.15	132.00
65	N 61° 45' 59" E	357.15	132.00
66	N 61° 45' 59" E	357.15	132.00
67	N 61° 45' 59" E	357.15	132.00
68	N 61° 45' 59" E	357.15	132.00
69	N 61° 45' 59" E	357.15	132.00
70	N 61° 45' 59" E	357.15	132.00
71	N 61° 45' 59" E	357.15	132.00
72	N 61° 45' 59" E	357.15	132.00
73	N 61° 45' 59" E	357.15	132.00
74	N 61° 45' 59" E	357.15	132.00
75	N 61° 45' 59" E	357.15	132.00
76	N 61° 45' 59" E	357.15	132.00
77	N 61° 45' 59" E	357.15	132.00
78	N 61° 45' 59" E	357.15	132.00
79	N 61° 45' 59" E	357.15	132.00
80	N 61° 45' 59" E	357.15	132.00
81	N 61° 45' 59" E	357.15	132.00
82	N 61° 45' 59" E	357.15	132.00
83	N 61° 45' 59" E	357.15	132.00
84	N 61° 45' 59" E	357.15	132.00
85	N 61° 45' 59" E	357.15	132.00
86	N 61° 45' 59" E	357.15	132.00
87	N 61° 45' 59" E	357.15	132.00
88	N 61° 45' 59" E	357.15	132.00
89	N 61° 45' 59" E	357.15	132.00
90	N 61° 45' 59" E	357.15	132.00
91	N 61° 45' 59" E	357.15	132.00
92	N 61° 45' 59" E	357.15	132.00
93	N 61° 45' 59" E	357.15	132.00
94	N 61° 45' 59" E	357.15	132.00
95	N 61° 45' 59" E	357.15	132.00
96	N 61° 45' 59" E	357.15	132.00
97	N 61° 45' 59" E	357.15	132.00
98	N 61° 45' 59" E	357.15	132.00
99	N 61° 45' 59" E	357.15	132.00
100	N 61° 45' 59" E	357.15	132.00



- NOTES:
1. ALL BEARING DATA WAS DETERMINED FROM U.S.C.G.S. TRIANGULATION NET.
  2. ALL MONUMENTS SHOWN ARE SET REBAR WITH PLASTIC CAPS.
  3. ALL RIGHTS-OF-WAY FOR STREETS ARE 60' WIDE EACH WAY FORBES PARK ROAD WHICH IS 80' WIDE.
  4. CIRCULAR RADIUS 80'.
  5. GROSS PLATTED AREA 20696 ACRES.
  6. PLAT INCLUDES LOT 189 THROUGH LOT 288.
  7. 15' WIDE UTILITY RESERVATION ON EACH SIDE OF EACH LOT BOUNDARY.